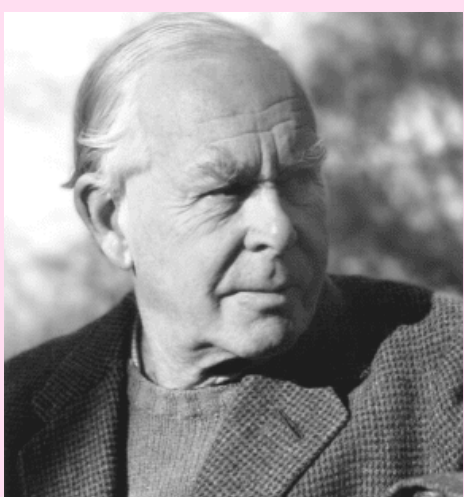


# All About Attachment



## Edward John Bowlby

Bowlby was a British psychologist. He is known as a significant figure for his:

- Interest in Child Development
- Pioneering work in Attachment Theory.

## What is Attachment?

Bowlby (1969) describes an attachment as a strong affectional bond that infants develop with the special people in their lives.

When an infant is securely attached, they feel a special sense of comfort and safety in the presence of their caregivers.



(Shaffer & Kipp, 2013)



## Why is Attachment Important?

"Attachment is the basis for all early relationships. It is what shapes, forms and influences who we are and how we are with others".

(Irish Attachment in Action, 2021)

## How do Educators Support Attachment in Child's Play?

In Child's Play, we nurture relationships using an attachment-based pedagogy called the Key-Person approach.



We foster a secure, meaningful bond between the child, parents and educator by:

- Listening to parents/guardians and working in partnership with them to settle in their child.
- Encouraging the child to settle in at their own pace.



We recognise the importance of attachment in early childhood by waiting for a child to develop a bond with an educator who then becomes their Key Person.



We value and respect the attachments that children make by providing nurturing environments for attachments to grow.

(NCCA, 2020)

For more information on the Key Person Approach:

- Barnardos Ireland Free Ebook - <https://shop.barnardos.ie/products/ebook-thekeypersonapproachpositiverelationshipswithchildrenintheearlyyears>

Child's Play  
Early Education & After School



DCU

#### References

Bowlby, J. (1969). Attachment and Loss: Vol. 1. Attachment. New York: Basic Books.

Irish Attachment in Action. (2021). What is Attachment? Retrieved from <https://iaia.ie/>

National Council for Curriculum and Assessment. (2020). Using a Key Person Approach. Retrieved from Aistear Síolta Practice Guide:

<https://www.aistearsiolta.ie/en/transitions/resources-for-sharing/using-a-key-person-approach.pdf>

Shaffer, D., & Kipp, K. (2013). Developmental Psychology; Childhood & Adolescence (9th Edition ed.). United States: Cengage Learning Inc.

# BENEFITS OF STRONG ATTACHMENTS FOR CHILDREN

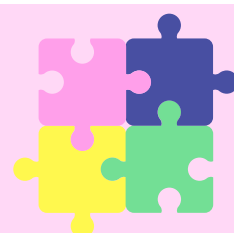
***“Every educator holds in his or her hands the power to shape a child’s entire future and the relationship between a child and a teacher cannot be underestimated”***

***- (Pam Schiller, 2009)***



## ***Consistency***

Educators afford children with the opportunity to develop meaningful attachment bonds, fostering warm, nurturing, and consistent high-quality education.



## ***Responsivity***

Educators follow the child's lead while being finely attuned, sensitive and responsive to their individual needs and cues.

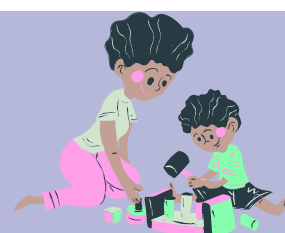
(French, 2019)



## ***Secure Base***

Educators who form a strong attachments to children create a secure base for them to learn, explore, and develop.

(Bowlby, 1969)



## ***Comfort***

Educators offer security, comfort and protection to the child while they are away from their primary caregivers.

(Page, 2017)

Likes & Dislikes

Learning Dispositions



Temperament

Strengths & Challenges

## ***Individual Growth & Development***

Educators develop a deep sense of knowledge and understanding of the child as an individual.

By knowing and understanding the child, the educator can adapt their practice to support individual learning, growth and development.

**For more information on Attachment:**

Irish Attachment in Action - <http://www.aia.ie>

**Child's Play**

Early Education & After School



**DCU**

#### References

Bowlby, J. (1969). Attachment and Loss: Vol. 1. Attachment. New York: Basic Books.

French, G. (2019). Tuning into Babies: Nurturing Relationships in Early Childhood settings. In B. Mooney (Ed.), Ireland's Yearbook of Education 2018 - 2019 (pp. 105-109). Dublin: Education Matters.

Page, J. (2017). Reframing infant-toddler pedagogy through a lens of professional love: Exploring narratives of professional practice in early childhood settings in England. Contemporary Issues in Early Childhood, 18(4), 387-399.

Schiller, P. (2009). The Intentional Educator: Beginnings Workshop. Retrieved from Exchange: <https://www.childcareexchange.com/library/5018557.pdf>